

Acorn Education

One Family Building Incredible Futures Together



**JUBILEE
SCHOOL**

Prospectus



Respect

Learning to respect ourselves, others and the environment.

Empower

Striving to become confident individuals who are independent, emotionally resilient and are equipped with leadership skills for the future.

Achieve

To succeed beyond previous expectation, to become responsible citizens and life-long learners.

Welcome



Jubilee School provides highly effective education, therapy, welfare and support for both boys and girls aged from 5 to 16 years who have social, emotional and mental health difficulties as well as other complex needs.

Typically students will present with behaviour that challenges, some will have associated learning difficulties and almost all children will have encountered negative educational experiences or disruption, and consequently lack confidence in their own abilities. A stable and caring environment combined with high staff to student ratios, ensures that every student at Jubilee School has the opportunity to develop their abilities, share new experiences and be supported in realising their future dreams. Jubilee School wants 'education' to be a positive and enjoyable experience where students are proud of their achievements and strive to do well.

Students may come from local families or foster placements and many of our students reside in one of the local children's homes offered by Acorn Education and Care.

Jubilee School also takes pupils from the four residential homes; Beachlands, Hayling Island, Denmead and Poppy Lodge.

Jo Summers
Headteacher

J. Summers

Aims and Values



The headteacher leads her team with absolute determination to provide a high-quality education for every pupil.

Ofsted May 2023

We Aim To:

- Promote a culture in which students feel safe, secure and have a voice.
- Foster a positive ethos to enhance students' self-esteem by celebrating success and progress.
- Provide a high level of support where interest is taken in each students' well-being.
- Provide appropriate behaviour support, specialist and therapeutic intervention.
- Set boundaries and expectations so students learn to take responsibility for themselves and their actions.
- Provide an enjoyable, relevant curriculum that addresses individual student needs.
- Ensure that the principles of Every Child Matters underpin our practice.
- Offer opportunities that broaden horizons and lead to national accreditations and certified awards.
- Maintain positive working relationships with all partners and stakeholders
- Actively promote students' participation in the local community.
- Value and support all members of the school community.
- Empower all staff to accept shared responsibility for the students in our care.

We Provide:

Individually designed education and therapeutic programmes, an ethos of mutual respect, trust and high expectations, a positive environment which celebrates and rewards success and progress, full time education in a creative and stimulating environment, emphasis on personal and social development and a pathway to independence, small teaching groups of 3 to 6 and high staff to student ratios.

Our Shared Values:

- All in our community are entitled to equal opportunity irrespective of gender, race, creed, background or ability.
- We promote the understanding and acceptance needed in a multicultural society and we celebrate the diversity and richness of that society.
- We are committed to working in partnership with others.
- We acknowledge the right to be heard and the responsibility to listen.
- We respect the self-esteem and dignity of others.
- We value the contribution of all the members of our community.
- To work co-operatively in teams and in partnership with others in school, homes and in the community.
- To develop a partnership with carers/parents.
- To own their work within the framework of agreed shared aims and values.
- To be involved in all aspects of our pupils' development.
- To exercise a duty of care and concern for the wellbeing and safety of all our pupils.
- To maintain the highest professional standards.

Our provision is tailored to each student ensuring that their educational, therapeutic and holistic needs are met, and barriers to learning are addressed.

The Code of Conduct of the Jubilee School Community specifies the right for everyone to enjoy their learning and leisure at school free from physical, mental and verbal abuse.

Curriculum

Jubilee School aims for students to be safe, happy and to engage positively in their learning and holistic development.

The school actively promotes a positive educational culture, through which students' efforts are privately and publicly acknowledged to celebrate individual achievements and enhance their self-esteem.

Jubilee School provides every student with a broad, balanced, differentiated and relevant curriculum based on the National Curriculum guidelines. A comprehensive 14-16 curriculum Pathway is available at Jubilee and at local colleges. This offers GCSE, BTEC, ASDAN, NVQ, DofE and other external examinations, catering for their current and future needs.

Life in Modern Britain

Our school aims to prepare pupils for life in Modern Britain. We promote fundamental British values throughout our curriculum and every element of the school. We provide opportunities for learning about democracy, individual liberty and mutual respect and tolerance of those with different faiths and beliefs.

“““

Staff are committed to changing pupils' lives for the better. A well-thought-out curriculum sits at the very heart of the school.

Ofsted 2023

Primary

KS2 Primary Curriculum

Jubilee School has a specialist primary department which supports KS2 pupils with social, emotional and mental health needs and encourages them to re-discover the fun in learning, re-engage with education, improve their academic progress and develop essential social and emotional skills.

The primary department is based in a modern, spacious, light single storey wing of the school.

We specialise in providing a stimulating, nurturing and safe environment where children can explore, have fun and enjoy learning through a range of personalised experiences. We are proud to offer a high staff to student ratio, with a maximum of six students per class.

The curriculum is designed specifically to promote effective learning skills as well as encouraging personal growth and development of the pupils.

All formal requirements of the National Curriculum are taught and a range of enriching extra-curricular activities are included regularly including Forest Schools.



We support pupils to develop their self awareness and self-esteem, enabling them to improve their behaviour for learning and allowing them to achieve their potential within a positive and nurturing environment.

All lessons are planned specifically to address the individual needs of the children. Each term the learning journey is planned around a specific topic which is then followed by a specialist subject such as Cooking, Music and Art.

To supplement our learning we have daily assemblies, and a Celebration assembly at the end of the week in which pupils are praised for their efforts and achievements.

Secondary

Pupil Centred Provision

The secondary curriculum at Jubilee School is tailored to individual needs and helps pupils become;

- Successful learners who enjoy learning, make good progress and achieve.
- Confident individuals, able to live safe, healthy and fulfilling lives.
- Responsible citizens who make a positive contribution to their local and wider community.

This approach to the curriculum planning ensures that each pupil is at the centre and the curriculum and services they require is tailored to meet their individual needs.

We are proud to offer a high staff to student ratio, with a maximum of six pupils per class. Extensive and individualised resources also allow for a bespoke approach to education and ensure the needs of all the pupils are met.

Each student is supported in identifying and achieving their ambitions through effective transition planning and a comprehensive careers service including support from an independent career advisor. Students are encouraged to voice their views regarding their provision and are involved in setting their own development targets to enable them to realise their short and long term goals.

Jubilee School encourages students to develop their learning, leadership and independence skills through a well-balanced curriculum offering academic, creative, practical and physical experiences. Embedded within the fabric of Jubilee School is the Social, Moral, Spiritual and Cultural development of each student. There is a strong emphasis on learning outside of the classroom making the most of the local facilities and the South Downs. We have developed strong links within our local community with local colleges, businesses, charities and sport centres.



Enriched Curriculum

The curriculum is further enriched through the following schemes and activities:

- Curriculum theme days - cross curricular theme days focusing on different cultural and religious events.
- Celebration days - celebrating our students' achievements, as well as acknowledging key national and international events.
- Work experience - all students in KS4 are offered work experience placements with a variety of local businesses.
- Residential trips - taking in a wide variety of locations including the Brecon Beacons and north Devon.

To find out more about our school curriculum, please see the website or contact the school.

“““

Staff understand pupils' strengths, talents and interests, as well as their barriers to learning. As a result, they meet pupils' individual needs.

Ofsted May 2023

Subjects

We offer a range of GCSE's, College course NVQ/BTEC, Vocational Skills and Vocational Qualifications.



“”

By the time pupils leave the school, they are in a better place socially and emotionally. They also have better mental health. They are confident, resilient and ready to take their place in the world.

Ofsted May 2023

Therapeutic Services

Our therapeutic model recognises that all the children and young people we support are individual and our provision is tailored to meet their needs and wishes from the point of admission and throughout their journey with us.

Working closely with the Head Teacher and the school's SENCO, Therapeutic support within the school is led by the Clinical Lead, a Consultant Clinical Psychologist and is delivered by a core multi-disciplinary team of clinicians made up of Educational Psychology, Occupational Therapy, Speech and Language Therapy and Psychotherapy. The team are able to undertake a full range of specialist cognitive and mental wellbeing assessments and within the first 16 weeks of joining the school, a full assessment will be carried out on each child or young person which will then inform the development of an individualised clinical plan. If indicated through the assessment the plan may include the provision of direct and or indirect, individual and or group therapeutic intervention.

The school's designated team reflects the needs of the children and young people that learn with us, however additional support can also be accessed



from other specialists within the wider Clinical Team. This enables us to be responsive to any newly identified, time limited or changing needs of a child or young person throughout their placement with us.

Offering highly specialised screening, assessment, consultation, reflective practice supervision and bespoke training, the embedded Clinical Team work directly with the education team to develop a shared understanding of the child's presenting needs and difficulties which may act as barriers to their personal and educational development as well as identify areas of strength which can support them to achieve, enjoy and fulfil their aims and wishes.

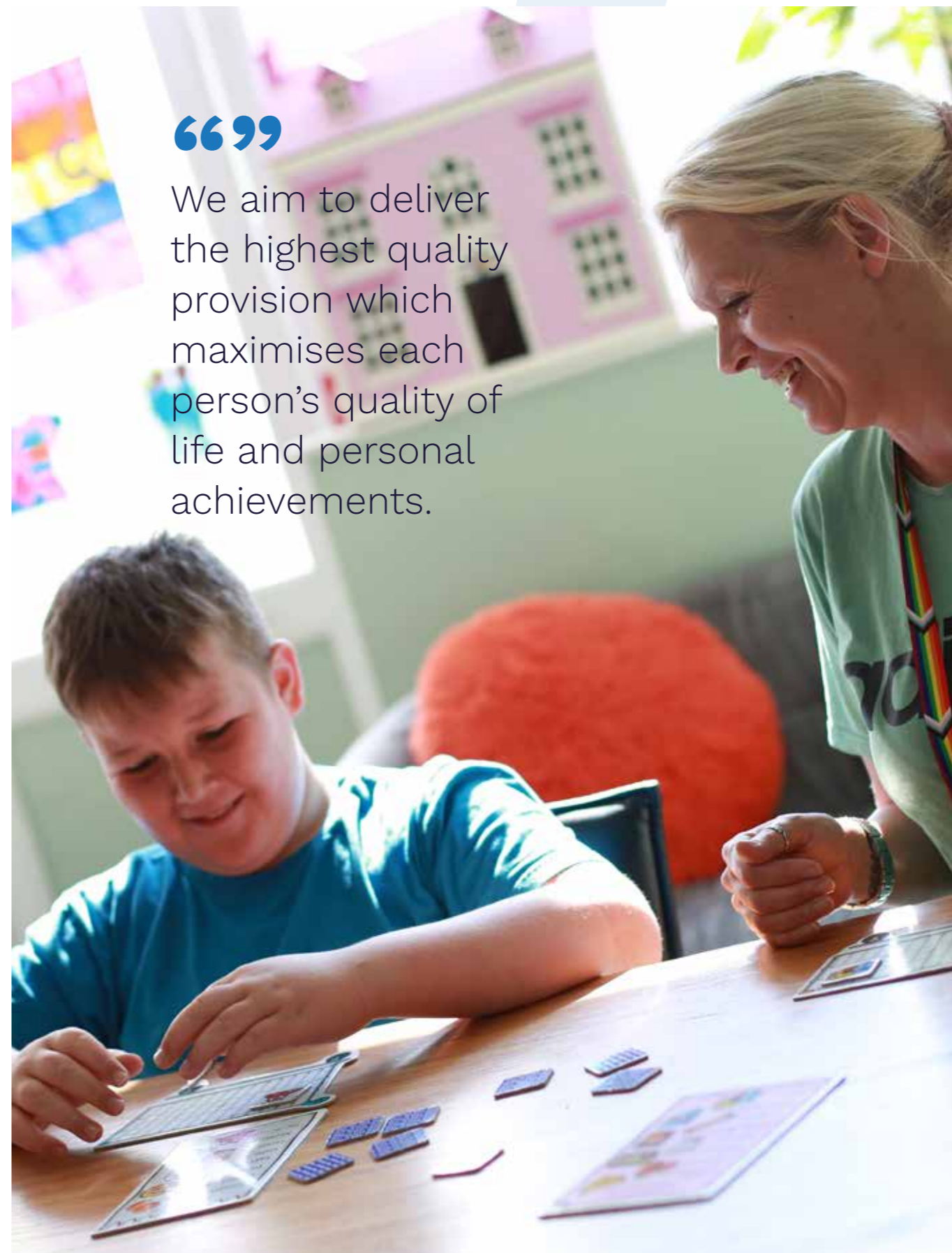
The clinical team support the education team in developing a pupil centred curriculum which pro-actively promotes the children and young people's emotional, social and mental health. We aim to deliver the highest quality provision which maximises each person's quality of life and personal achievements.

Our evidence informed models are based on best practice guidance and are governed through the Outcomes First Group Governance Framework. As well as classroom based interventions, the clinical team offer direct therapeutic work within the school's designated therapy suite. This offers the children and young people a safe and private protected space within which to engage with their therapist.



The provision a pupil receives at Jubilee School is completely matched to their needs.

The level of support and intervention a child receives is based upon their level of need. The school's Special Educational Needs Coordinator (SENCO) manages the learning and development support programmes linking closely with the schools Educational Psychologist. Through a robust monitoring system, we are quickly aware of any changes in pupils or any new areas of need that will need to be supported.



““

We aim to deliver the highest quality provision which maximises each person's quality of life and personal achievements.

Accessing our school

We welcome visits from potential parents and carers who wish to consider their child for the school.

We currently have strong relationships with a number of educational local authorities and SEN teams in the region, following your visit if you would like to proceed with a placement at the school you will be advised to engage with these teams.

Students also attend via our four residential homes in the Hampshire group; Beachlands, Hayling Island, Denmead and Poppy Lodge.

The registered age range for pupils is 5 to 16 years old and covers Key Stages 2, 3 and 4.

Contact with the school is to be made via the School Referral Officer available on 02392 250963.

There is a referral to admission process which is carried out. Once the referral has been received, all information about a prospective student will then be gathered to inform the assessment as to whether the school is able to meet their needs before a decision on placement is made.

Safeguarding/ Child Protection.

Safeguarding and promoting the welfare of the pupils in our care is our main priority and we expect all staff to share this commitment.

To read our safeguarding and child protection policy please see our website.



For more details of the schools admission processes please refer to the Admissions Policy on the schools website.

Tel: 02392 250963

Email: info@acorncare.co.uk

www.acornjubileeschool.co.uk

**We support
children and young
people to take life's
important steps**



Part of
Acorn Education

Jubilee School, 84-86 Jubilee Road, Waterlooville,
Hampshire, PO7 7RE

02392 250963

www.acornjubileeschool.co.uk
jubilee@acorneducationandcare.com